



THE CULLIGAN® MARK 100 WATER SOFTENERS

Culligan
THE WATER EXPERTS

www.culligan.com

THE SMARTER SOFTENER.

With the Culligan® Mark 100 Water Softener, you'll enjoy all the benefits of soft water. Clothes will be cleaner using less soap. Dishes will sparkle and skin will feel smoother. And because the Culligan Mark 100 Softener knows exactly how much soft water you're using, it will only regenerate when necessary. You'll save plenty on salt, electricity and water.

THE ACCUSOFT™ MICROPROCESSOR.

The brains behind the operation.

A technologically advanced, fully programmable 4-bit microprocessor with 4K ROM.

- constantly calculates your actual water usage, then regenerates only when necessary.
- lets you set options with fully programmable solid-state electronics.
- has a protected programmed memory, not affected by most power interruptions.



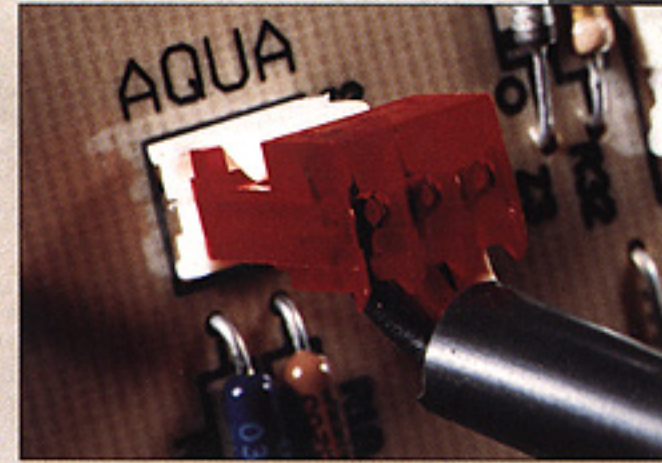
BUILT BY CULLIGAN. BUILT TO LAST.

As with all Culligan products, the Culligan Mark 100 Softener is built for strength and durability. The exclusive Tripl-Hull™ Softener tank is backed by the Culligan Limited Lifetime Warranty.



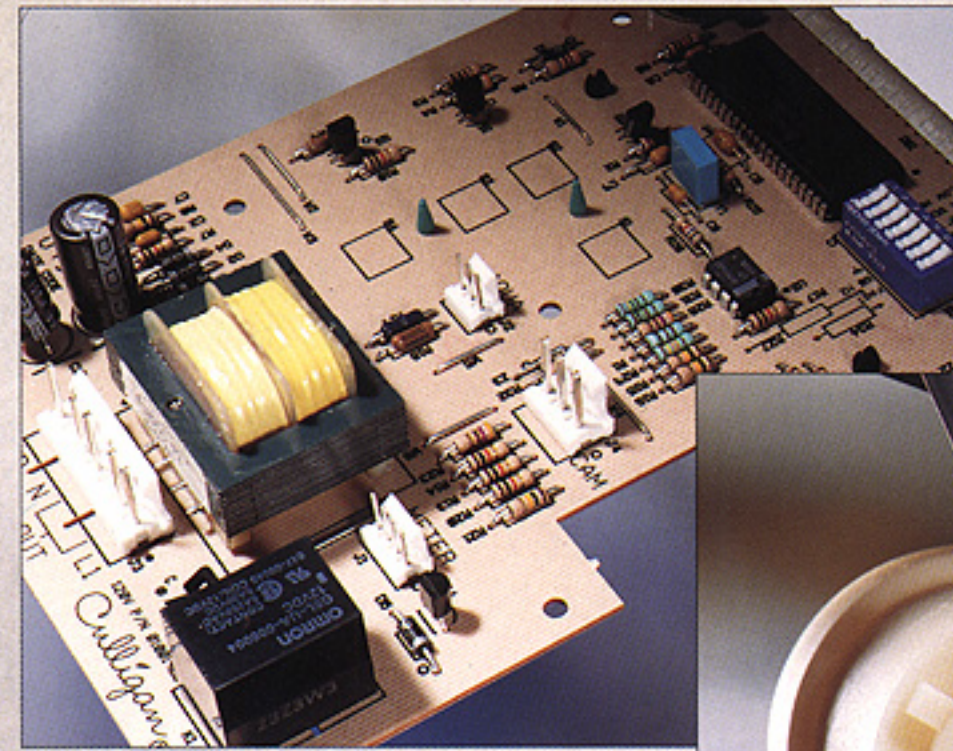
FULLY PROGRAMMABLE ELECTRONICS

With easy data entry, performance options can be set at the touch of a button.



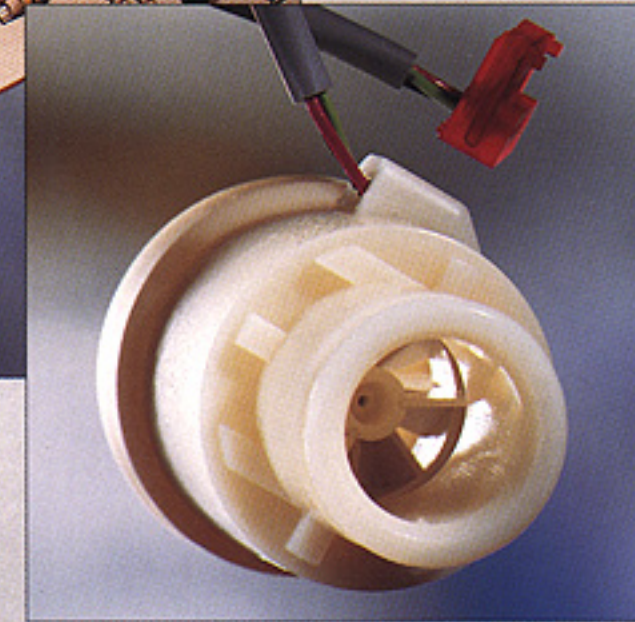
CULLIGAN® AQUA-SENSOR® SENSING DEVICE*

Electronically activated sensor measures hardness levels and regenerates only when needed, reducing salt, water and electric usage.



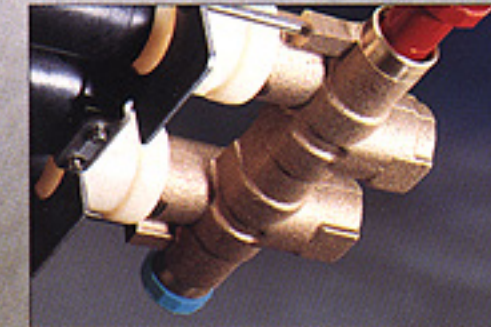
ACCUSOFT™ MICROPROCESSOR

A fully programmable 4-bit microprocessor, with 4K ROM is not affected by most power interruptions.



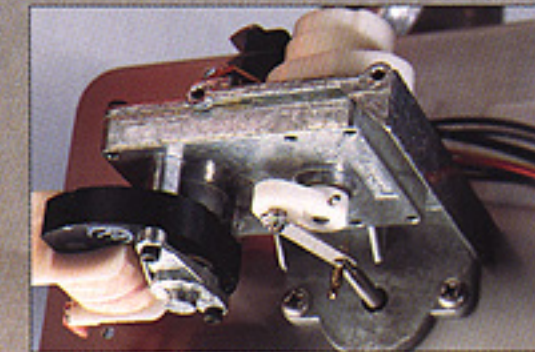
CULLIGAN® SOFT-MINDER® METER*

State of the art turbine meter monitors water use and regenerates your conditioner only when necessary, saving salt and water.



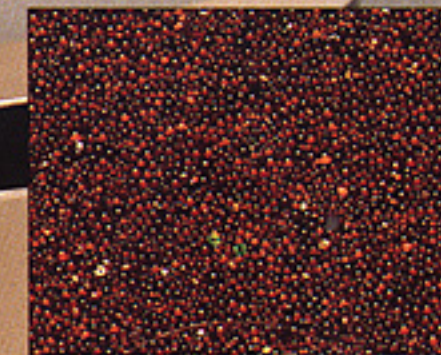
CUL-FLO-VALV® WATER BYPASS

This special valve allows you to manually bypass the system for water use not requiring softened water—such as washing the car or watering the lawn.



DEPENDABLE DRIVE PISTON

Powered by a reliable high torque motor for smooth, efficient operation.



CULLEX® RESIN

Made to Culligan's demanding specifications to ensure the highest efficiency for proper softening capacity and increased water flow.



CULLIGAN® MARK 100 SOFTENER BRINE TANK

Features a Dubl-Safe™ brine refill control which provides for assured float shut-off and corrosion-proof components for long life.



TRIPL-HULL™ MINERAL TANK

The exclusive corrosion-resistant liner and heavy 15 gauge steel tank are backed by the Culligan Limited Lifetime Warranty.



* Consult your Culligan dealer to choose the best operating mode for your water supply.

THE CULLIGAN PROMISE.

At Culligan, we understand that a water quality improvement system is an investment in your family. That's why our 1350 independently-operated dealers and licensees worldwide don't just sell products—they sell water quality you can count on. We stand behind our products with comprehensive limited warranties and unequalled Culligan service and dependability. No matter where you live, you can depend on Culligan expertise to work for you—today and tomorrow.



ONLY CULLIGAN® WATER SOFTENERS COME WITH CULLIGAN MAN SERVICE.

Culligan water products come with a special feature. The Culligan Man. His prompt, efficient service is something other brands or retail stores just don't have and another reason why Culligan products work so well, year after year.

TRUST THE WATER EXPERTSsm

At Culligan, water is all we do. For over 50 years we've been solving all types of water problems with the highest quality water products. So for brighter clothes, dishes that sparkle and great-tasting water there's only one name to trust. Culligan. The water experts.



Culligan
THE WATER EXPERTS

www.culligan.com